

## Riverside STEM Academy Drop-off and Pick-up Procedures

It is very important for RSA students' safety that parents and others dropping-off and picking-up students follow these procedures. Dropping-off and picking-up students can be a challenge so you when arriving to the campus please be patient and courteous to other drivers. Please allow enough time for you to be able to drop-off your child so that they will be in their first period class on time. Students can be dropped-off or picked-up 30 minutes before school and 30 minutes after school.

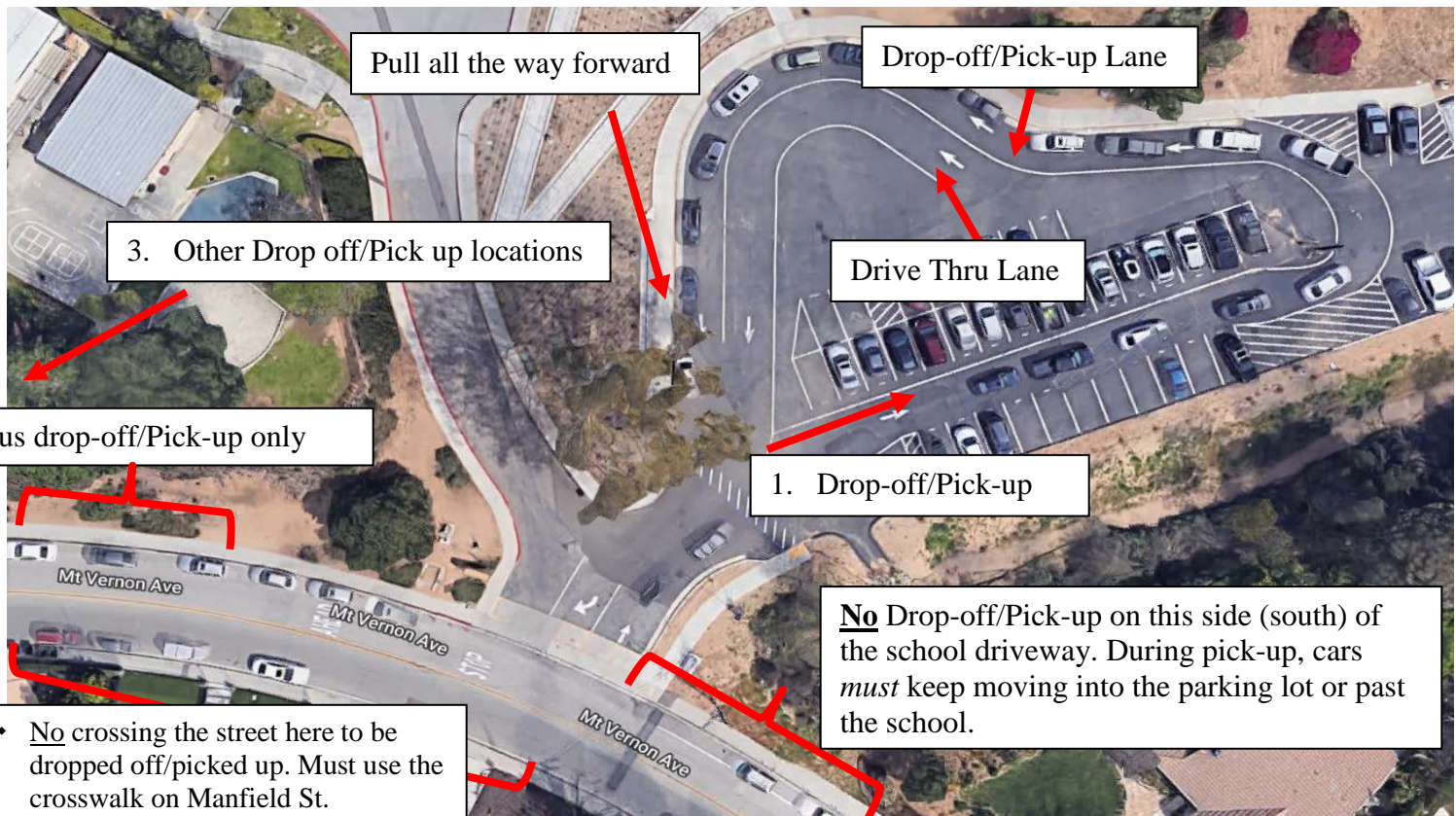
### Drop-off/Pick-up Procedures:

There are several locations that students can be dropped off and picked-up from school:

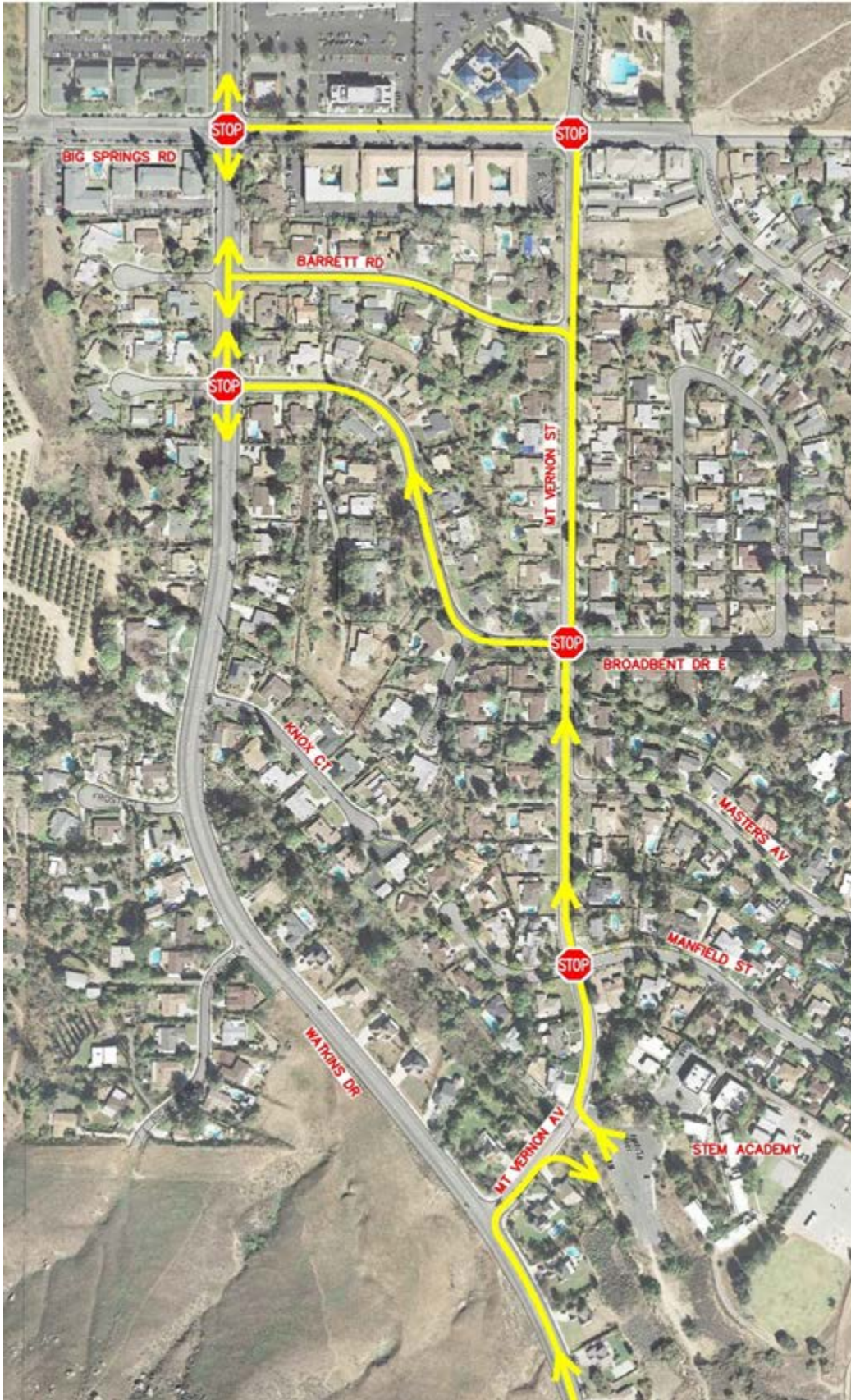
1. Students may be dropped off in the lower parking lot. Follow the white lines and **DO NOT STOP IN THE DRIVE-THRU LANES** to drop-off or pick-up students. Students must be picked up and dropped off only in the Drop-off and Pick-up Lane next to the curb (see the diagram below). **Please pull as far forward as you are able in the Drop-off and Pick-up Lane to ensure student safety and eliminate gaps in traffic.**
  2. Students can be dropped-off on the sidewalk in front of the school that leads up to the buildings (see the diagram below).
  3. Away from the school: We encourage students to be picked-up and dropped off further down Mt. Vernon and on the streets close to the school shown on the map on the back of this page. This will alleviate traffic congestion near the school.
- ❖ Students that are dropped/off and picked-up across the street on Mt. Vernon **MUST USE THE CROSSWALK** at Manfield St. and Mt. Vernon Ave. **Students are not allowed to cross the street in front of the school.**

### Places Students cannot be dropped-off or picked up:

1. In the Drive-thru lane
2. In the Bus Lane
3. In the street. Students must use the crosswalk at Manfield St. and Mt. Vernon Ave.



## Riverside STEM Academy Driving TO and AWAY from the School Procedures



To alleviate traffic congestion before and after school, the RSA staff asks that you follow the driving rules below when coming to and leaving the school:

1. Before School: From 7:15AM-8:45AM drivers may **only turn right into** the parking-lot and **only turn right out** of the parking lot.
2. **After School:** Wed from 12:00PM-1:00PM, and Mon – Fri from 2:00PM-3:15PM drivers, may **only turn right into** the parking-lot and **only turn right out** of the parking lot.
3. After dropping-off/picking-up students, turn right and leave the school through one of the streets marked in yellow on the map to the left.
4. Do not make U-turns in the street or at street corners.
5. Do not pull into driveways of the houses in the neighborhood.
6. Do not park cars in the “No Parking” zones. Drivers may pick up students in areas indicated on the front of this page but may not leave their vehicles.
7. Cars in the drive-thru lane, south of the entrance of the school, must move with the flow of the cars. Drivers may not wait in this area to pick-up students.
7. Please **be courteous** to other drivers.
8. Please **be respectful** of the neighborhood